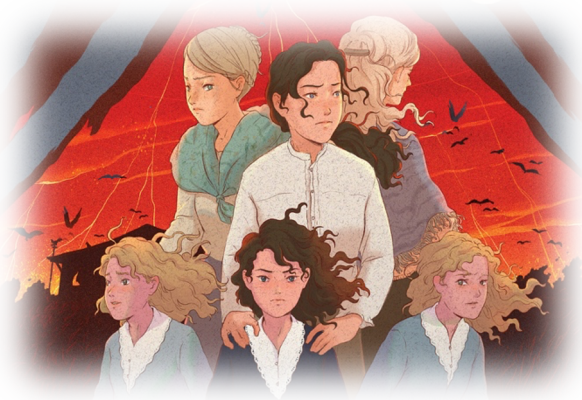


SISTERS OF THE LOST MARSH

LUCY STRANGE

WHICH SISTER ARE YOU?



1. Pick a book:

- 1) A princess who wants to be a dancer.
- 2) The thwarting of a wicked goblin.
- 3) A piratical romance.
- 4) A story about wild horses.
- 5) A fairy tale about marsh mermaids.

2. At the top of a hill on a sunny day, you . . .

- 1) Sing!
- 2) Play with your dog.
- 3) Tell the others it's time to get moving.
- 4) Lie back and soak up the sunshine, the smell of the earth.
- 5) Roll down it.

3. At a wedding, you would rather . . .

- 1) Lose yourself in the music.
- 2) Blend in and scavenge for snacks.
- 3) Be the centre of attention.
- 4) Keep watch for trouble.
- 5) Be complimented on your outfit.

4. How do you feel about breaking the rules?

- 1) Only if I'm desperate.
- 2) I will, to protect others.
- 3) Rules are for other people.
- 4) Bring. It. On.
- 5) I like reminding other people about what the rules are.

5. Pick a job to do on a farm:

- 1) Bottle-feed orphaned animals.
- 2) Run around the fields rounding up stray sheep.
- 3) Be in charge of the farmhouse kitchen.
- 4) Groom, feed and muck out the horses.
- 5) Collect the eggs.

6. At a fayre, would you rather . . .

- 1) See a fortune teller.
- 2) Watch a magic show (but not participate).
- 3) Meet an attractive stranger.
- 4) Watch the big show with all the animals.
- 5) Buy something pretty!

7. In a family argument, do you . . .

- 1) Try to smooth things over.
- 2) Stay quiet until I need to step in.
- 3) Say pretty much what I like.
- 4) Get really stuck in and say things I'll regret later.
- 5) Keep out of it.

KEY

Mainly 1s

You are like Grace - 16. The oldest sister; betrothed to the loathsome Silas Kirby. Caring, gentle, musical - loves to sing and dance, but terrified about what the future holds . . .

Mainly 2s

You are like Darcy - 7. The youngest of the triplets. Quiet, clever, afraid of nothing - not even the fate the Curse of Six Daughters predicts for her, or the horrors of the Marsh King . . .

Mainly 3s

You are like Freya - 15. Bossy, forthright, decisive. Likes to be at the centre of things.

Mainly 4s

You are like our rebellious heroine Willa - 12. Hot-tempered and impulsive. Loves looking after the animals on the farm, but hates the cruel restriction of the Curse of Six Daughters.

Mainly 5s

You are like Dolly & Deedee - 7. The oldest two of the triplets. Giddy, charming, vain and "silly as geese."